



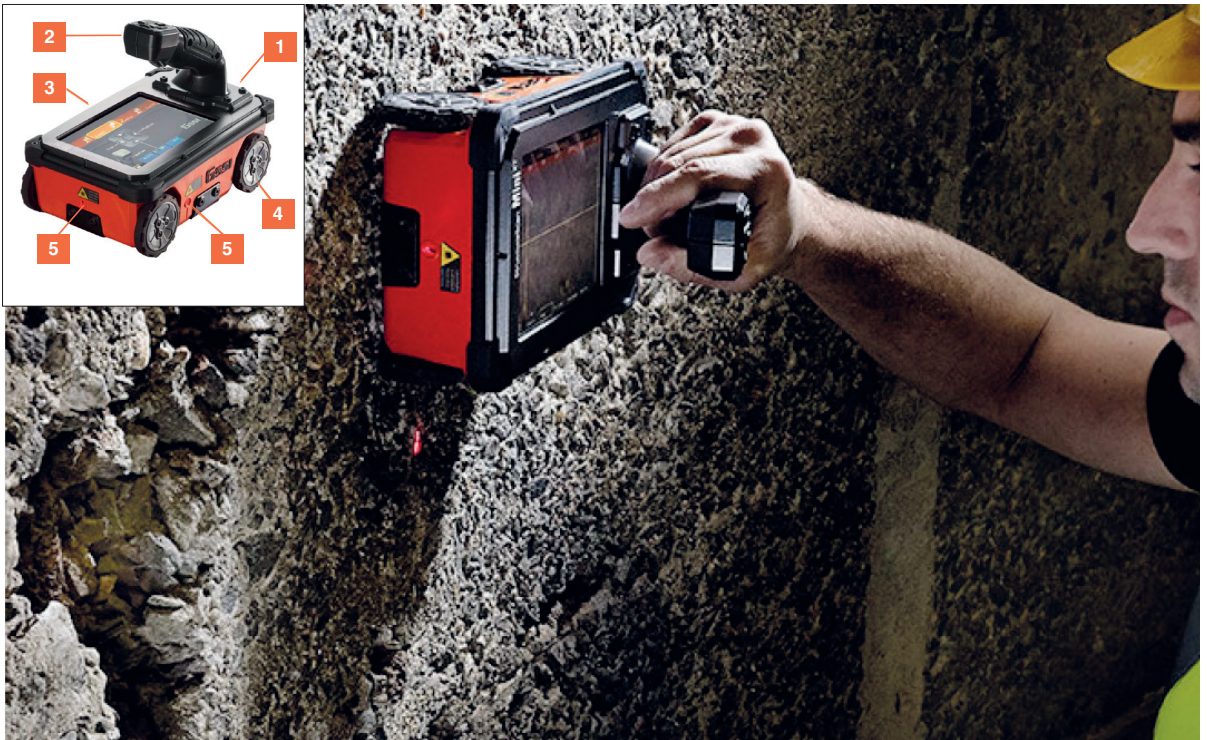
CODEVINTEC

Tecnologie per le Scienze della Terra e del Mare

45° 27' 39.384" N
9° 07' 30.145" E

StructureScan™ Mini XT Complete GPR Systems for Concrete Inspection

1. All-in-One hand-held GPR system
2. Ergonomic handle with six-button control
3. HD touchscreen display with easy to use operator interface
4. Survey wheel encoder
5. Guiding laser for locating and 3D surveying



The StructureScan Mini XT is GSSI's newest generation of our very popular all-in-one GPR systems.

Typical Uses

- > **Concrete inspection** – locate metallic and non-metallic targets in walls, floors and ceilings
- > **Structure inspection** – bridges, monuments, walls, towers, tunnels, balconies, garages, decks
- > **Condition assessment** – map relative concrete condition for rehab planning
- > **Measure slab thickness**
- > **Void location**



StructureScan Mini XT

The StructureScan Mini XT is ideal for locating the position and depth of **metallic and non-metallic objects** in concrete structures, including rebar, conduit, post-tension cables, voids and service utilities. In addition, the Mini XT can help identify structural elements including pan deck, concrete cover and slab thickness.

High Frequency, High Resolution Concrete Antenna

- > The StructureScan Mini XT employs a new 2.7 GHz antenna positioned 8 mm off the surface, providing additional ground clearance which allows the antenna to be used over rough concrete surfaces. This antenna provides **excellent near surface resolution** while also maintaining the ability to resolve deeper targets.

Forward Thinking Design

- > Incorporated into the design are three accessory ports that allow for future expansion. The extension pole accessory, with six-button remote operation, is ideal for walking and wall surveys.

Enhanced Data Visualization

- > **Get first-in-class data visualization** with a state-of-the-art 6.5 inch HD touchscreen user interface and different operation modes designed for beginner to advanced use.
- > **Use QuickScan to collect data** with the push of one button, or select any of the app-based data collection options including ScanMax and Scan3D for advanced data interpretation.
- > **Customize the data display** with a variety of color adjustments. Real-time migrated data, onscreen reference markers and real-time signal floor indicator are also available.

Features

The StructureScan Mini XT offers a 2.7 GHz antenna for superior target resolution and can reach depths of 20 inches (50 cm). Ideal for locating rebar, conduits, post-tension cables, voids and real time determination of concrete slab thickness.

Expanding Capabilities and Functionality

Palm XT

This 2300 MHz Palm XT antenna offers superior depth penetration and resolution. Palm XT is a small form factor GPR antenna that gives users unprecedented access in tightly spaced areas and enables easy overhead scanning. It features a full keypad control via the antenna top that provides remote control of the user interface.

The antenna has seamless software integration with three data collection modes that provide the user with in-field options for data collection.

- > **Standard mode** – Requires no special set up, and is **ready for plug-and-play** operation
- > Cross Polarization mode – **Highlights non-metallic objects**, such as PVC, and de-emphasizes metallic objects like rebar and wire mesh

- > **Side Car mode** – Transitions the survey wheel to the side of the antenna and **allows it to fit into smaller spaces**





StructureScan XT Data Modes

The StructureScan Mini XT features three data collection modes; Simple, Standard, and Advanced.

Simple mode is perfect for quick data collection - simply select the depth of survey and concrete type, and start scanning.

Standard mode offers two apps, Scan3D and ScanMax. Advanced Mode offers XScan and DualScan apps for expanded data interpretation.

Advanced Visualization

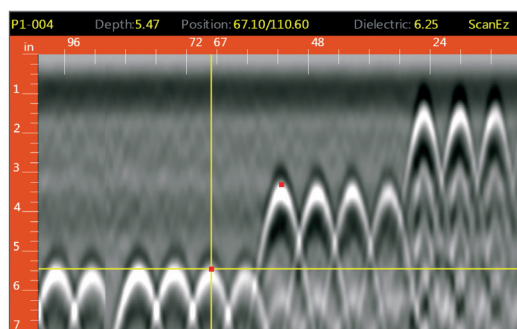
- > **Scan3D - Revolutionary three-dimensional** x-ray like image with five view points
- > XScan - Visualize two perpendicular 2D profiles in a 3D format
- > DualScan - Compare two parallel 2D profiles in raw or focus mode

2D Data Collection

The StructureScan Mini XT provides intuitive data visualization and includes multiple color themes, save image functionality and real-time display adjustments



StructureScan Mini XT user interface illustrating the Standard mode of operation.



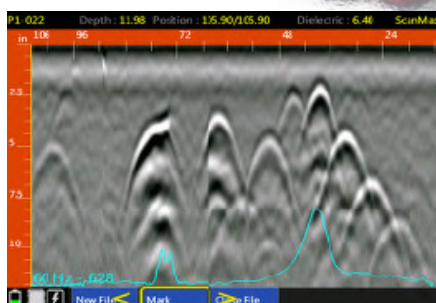
Data illustrates several metallic targets at various depths collected in Standard mode using the ScanMax application. Red dots and crosshair identify user marked targets.

LineTrac XT

LineTrac XT adds the ability to detect AC power and induced RF present in conduits. Locating specific power sources in concrete can be very complex. Site conditions resulting from various renovations and modifications can make the job more difficult and time consuming. This accessory combines radar data with a magnetometer.

LineTrac XT detects extremely low amplitude AC signals associated with difficult to locate conduits. LineTrac has a number of features to easily identify target utilities, including:

- > Seamless fusion with GPR data
- > Aids in target discrimination
- > Detection at 50/60 Hz
- > Rugged, IP-65 rated enclosure



Screen image illustrates GPR data of a suspended concrete slab with metallic reinforcement and a conduit with the presence of live power, indicated by the blue peaks.

**CODEVINTEC**

Tecnologie per le Scienze della Terra e del Mare

© 2018 - Codevintec Italiana srl, Milano

Technical specifications

System

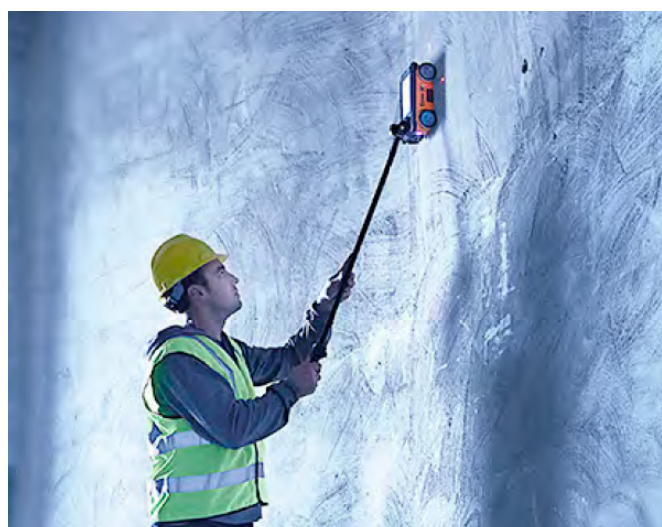
| | |
|--------------------------|--|
| Antenna Center Frequency | 2.7 GHz |
| Display Modes | Linescan, Focus and 3D |
| Data Storage | 14.5 GB (340 - 2x2 3D images) |
| Depth Ranges | 4, 8, 12, 16, 20 inches (10, 20, 30, 40, 50 cm) |
| Battery | Li-ion Battery, 2.5 hour runtime (battery life dependent on level of display brightness and usage) |
| Data Format | RADAN .dzt |
| Languages | English, French, Japanese, Chinese |

Environmental

| | |
|-----------------------|--|
| Operating Temperature | -4°F to 104°F external (-20°C to 40°C) |
| Storage Temperature | -40°F to 140°F external (-40° to 60°C) |
| Relative Humidity | <95% non-condensing |
| Environmental | IP-65 Rate |

Mechanical

| | |
|--------------------------|---|
| Dimensions | 9.3 x 6.2 x 7.3 in. (23.6 x 18.4 x 15.7 cm) |
| Weight | 4 lbs. (1.8 Kg) with battery |
| System Height Off Ground | 31 inch (8mm) |
| Display Size | 6.5 inches |
| Display Resolution | 1024 x 768 |



Systems include

| |
|--|
| StructureScan Mini XT |
| Dual battery charger |
| Two Li-ion batteries |
| AC power adapter for battery charger |
| International plugs for AC power adapter |
| Transit case |
| Safety wrist strap |
| 3 mm hex driver tool |
| Data collection grids (sample pack) |
| User Manual |
| 2-year warranty and training at a GSSI Training Center |

Additional Accessories

| |
|---|
| Li-ion battery |
| Dual bay battery charger with four (4) international adapters |
| Extension pole with six-button remote capability |
| Extension pole case |
| RADAN 7 for StructureScan Mini |

Integrated Tool

All-in-one concrete inspection tool - antenna, positioning system and control unit. State-of-the-art touchscreen interface and six-button control for enhanced usability.

Rugged, Compact Design

This new generation system is IP-65 rated to withstand the jobsite's toughest conditions.

System Flexibility

The StructureScan Mini XT will offer multiple accessories for various survey options and advanced data collection modes.

Durability

Ruggedized plastic casing and wheels for long-lasting performance.

Value

The perfect blend of price and performance, backed by a two-year warranty.



Codevintec Italiana srl

**Milano
Roma**via Labus, 13 – 20147 Milano
Lungomare P.Toscanelli,64 – 00122 Romainfo@codevintec.it
www.codevintec.itph +39 02 4830.2175
fax +39 02 4830.2169